

PRODUCTION RANGE/CAPACITY

SIZE RANGE				CAPACITY (MT)
LINE	O.D(INCH)	THICKNESS(MM)	LENGTH(M)	
JCO(E)	18~60	Max. 60	12.8	100,000
ROLL BENDER	40~120	Max. 50	12	50,000
TOTAL				150,000



KEY PROJECTS

COUNTRY	END-USER	NAME	GRADE	SIZE
UAE	TAKREER	Ruwais Refinery Expansion PKG #3	A671 GR.CC65 (CL22/32)	20"~120" 9.53mm~31.75mm
UAE	PORT OF FUJAIRAH	VLCC JETTY NO.1	API 5L GR.B (PSL2)	20"~36"x9.5mm/12.7mm
KSA	ROYAL COMMISSION	Expansion of Fuel & Feedstock Pipeline	API 5L GR.X60 (PSL2)	24"x9.5mm/12.7mm
IRAQ	SOC	Zubail Oil Field	SOUR A671 GR.CC65 (CL22)	32"x36.8mm
QATAR	CITY DEVELOPMENT COMMITTEE	Khalifa Stadium Expansion	BS EN 10219-1	18"~44"x11mm~50mm
UAE	DUBAI PETROLEUM	Rashid C Offshore Platform	APL 2B (2H-50)	20"~36"x12mm~45mm
INDIA	ONGC	C-Series Offshore	API 2B (2H 50Z, DH36)	20"~66"x25mm~40mm
KSA	AIR PRODUCT	Jazan Igcc	API 5L GR.B (PSL1) A671 GR.CC60 (CL22)	18"~120"x9.53mm~42.8mm
U.K.	SCOTTISH POWER	East Anglia One (Offshore Wind Farm)	BS EN 10225/ BS EN 10025	32"~64"x18mm~41.3mm
UAE	Investment Corp. of Dubai ICD	ICD Tower	BS EN 10210-1	20"~46"x15mm~50mm
UAE	EMAAR	DUBAI HILLS&CREEK	API 5L GR.B (PSL1)	18"~56"x9.53mm~12.7mm
U.K.	MORAY OFFSHORE WIND FARM LTD	MORAY FIRTH WIND FARM	EN10025/EN10225	22"~65"x19mm~45mm
KAZAKHSTAN	KPO	KGDBN	SOUR A671 GR.CC60 (CL22)	20"~30"x26.19mm~38.89mm
UAE	ADNOC	M PJT	SOUR A671/A672 GR.CC65/C65 (CL22)	26"~48" x9.53mm~28.58mm

GLOBAL SeAH



SeAH Steel UAE LLC

P.O. Box 14576, Al Ghail Industrial Zone of RAKEZ, Ras Al Khaimah, UAE
 TEL +971-7-258-9440
 FAX +971-7-258-9446

SeAH Steel Middle East Office

P.O. Box 263476, Dubai, UAE
 TEL +971-4-884-1624

www.seahsteel.co.kr

AT A GLANCE

- Non-FZ Joint Venture Established between UAE RAKEZ and KOREA SeAH Steel Corp.
- JCO(E) and Roll Bender Lines with Factory Area of 127,157m²
- Applicable for On/Off Shore Line/Structural Pipes for Oil/Gas & General Ordinary Pipes for Refinery, Water, Piling, etc



COMPETITIVE EDGES

- Technical Cooperation with SeAH Steel Korea (Since 1960)
- Adapted State-of-the-art Equipments inc. Sour Service and ERP System
- First Manufacturer of Heavy Wall SAWL Pipe up to 60mm Thickness in MENA Region
- Customized Pricing & Short Delivery with Stock Material and Flexible Production
- ICV Certified Carbon Steel Welded Pipe Manufacturer in UAE
- Successful Performance on Key Projects



MANUFACTURING PROCEDURE

JCO(E) LINE



Edge Milling/Pre-bending



JCO Pressing



Tack Welding



Inside Welding



Hydrostatics Testing



Calibration (Cold Expanding)



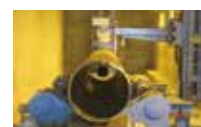
Intermediate X-ray



Outside Welding



Auto Ultrasonic Testing
if required acc. to Spec.



X-Ray Testing with recorded
DVD as per request



Heat Treatment
if required acc. to Spec.



Inspecting & Packing

ROLL-BENDER LINE



Plate Gas Cutting



3 Roll Bending



Tack Welding



12M Longitudinal Welding (Inside)



12M Girth Welding (Outside)



12M Girth Welding (Inside)



Fitting Up



12M Longitudinal Welding (Outside)



120" Hydrostatics Testing
If required



X-Ray TEST with recorded
DVD as per request



Furnace (Heat Treatment)
if required acc. to Spec.



Inspecting & Packing

ADVANCED EQUIPMENTS

- Sour Serviced Lab. (HIC/SSCC)
- Automatic Ultra-sonic Tester
- DWTT Room, Cold-Expander
- Two(2) Heat-treatment Furnances (Max. temperature at 960°C)
- Hydrostatics (Max. 600kgf/cm², Up to 120")



SUPERIOR QUALITY CONTROL

- Certified to ISO 9001/14001, OHSAS 18001, ISO/TS 29001
- Registered with API Q1, CE API 5L(Line Pipe) & API 2B(Structural Pipe), EN10219(Cold Formed), EN10210(Hot Finished), EN1090
- Approved from ADCO, TAKREER, ADMA-OPCO, ADWEA, ADGAS, GASCO, ZADCO, NIOC/NIGC, etc
- Qualified Welding Inspectors & Auto Machine with CNC Controller
- Excellent Pipe Welding Control
- Non Destructive Test(UT/RT/MT/PT)
- Reliable Traceability based on ERP System

